

FEATURES

- ❖ Separate Start /Stop Relays
- ❖ 12A/250V AC Relay contacts
- ❖ LED relay position indication
- ❖ AC OR DC operation

APPLICATIONS

- ❖ Latching Motor starter control
- ❖ Pulsed lighting control

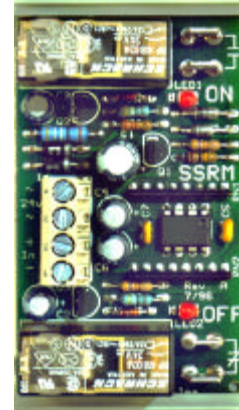
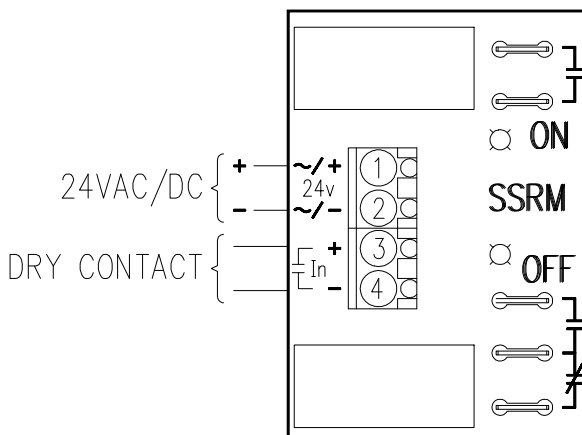
DESCRIPTION

The SSRM is a Start (on) Stop (off) Relay Module that accepts a single maintained dry contact and provides a ½ second contact pulse on input contact closure and a ½ second contact pulse on input contact open. The SSRM has two Form C relays, rated at 12 Amps (for complete specifications see OUTPUT RELAY SPECIFICATIONS). The SSRM can be used in applications where a single pulse turns on the device and a second single pulse turns off the device such as: motor starters and GE lighting relays.

OPERATION

The SSRM is powered by either a 24V AC/DC supply. The input signal is fed to two op-amp stages where the trip point and pulse timing are set for the start and stop pluses. The start relay energizes for a ½ second when the input goes low, and the stop relay energizes for a ½ second when the input goes high. Two LEDs indicate when the relays are engaged.

WIRING CONFIGURATION



SPECIFICATIONS

SIZE:	3" L x 1 ¼" W x 1.25" H
MOUNTING:	3" RDI snap-track (supplied)
POWER:	24V AC ± 10%, 50/60Hz, 1.3VA 24V DC @ 7.0mA stand-by 24V DC @ 24mA relay activated
INPUT SIGNAL:	Dry contact
INPUT IMPEDANCE:	10K ohms.
ACTION:	Pulse on input closer Pulse on input open
OUTPUT PULSE:	½ sec. pulse on input pulse
AMBIENT TEMP:	0-50°C

OUTPUT RELAY SPECIFICATIONS

RELAY TYPE:	Schrack # RP418024 24V DC
RELAY CONTACTS	
TYPE:	1 Form C
RATING:	12 Amp @ 30V DC resistive 12 Amp @ 120V, 250V AC resistive
MATERIAL:	AgCdO
ELECTRICAL LIFE:	> 250k operations (12A,250V AC)
MECHANICAL LIFE:	> 30 million operations
DIELECTRIC STRENGTH:	4000V AC coil/contact

ORDERING INFORMATION

SSRM - Start / Stop Relay Module

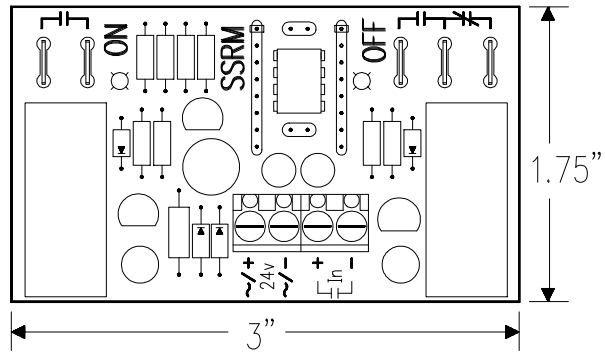
INPUT CONNECTION

Wieland #25.163.0453 Screw-cage clamp type
UL: 20 Amp 12-20 Awg 300VAC.

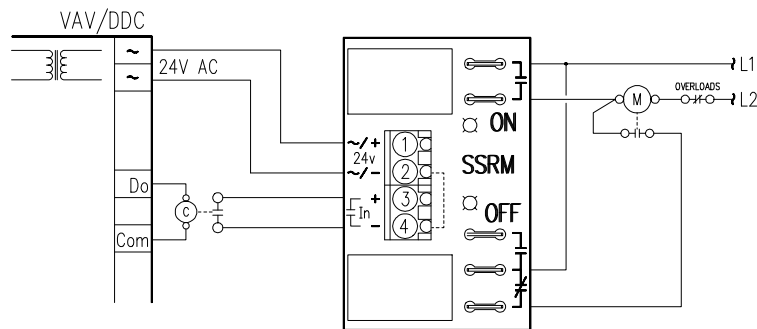
OUTPUT CONNECTIONS

Keystone #1287 PC Quick-fit Terminals .250"
Molex #BB-2206 Insulated Quick connector .250

PHYSICAL CONFIGURATION

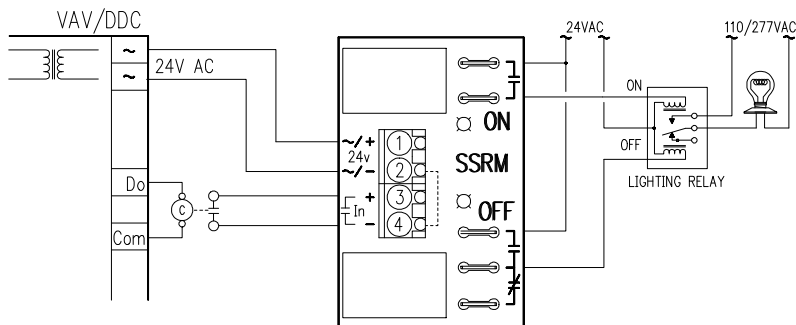


TYPICAL APPLICATION - LATCHING MOTOR STARTER CONTROL



The SSRM uses a half-wave rectifier as it's power supply, term #2 & #4 are common. The input of the SSRM is looking for a dry contact closer as it's input signal. The output is connected in a latching circuit using the motor starters status contact as the latch for the circuit. The SSRM provides a on pulse to energize the starter contact, and a off pulse which opens the latch circuit.

TYPICAL APPLICATION - PULSED LIGHTING CONTROL



The SSRM uses a half-wave rectifier as it's power supply, term #2 & #4 are common. Th input of the SSRM is looking for a dry contact closer as it's input signal. The output is connected to a lighting relay that is looking for a pulse to turn on (latch on) and a off pulse to turn off (latch off). The SSRM provides the on/off pulses from a single relay contact closer and opening.

Call for other calibration ranges and versions.

If you have a different application or need, please call 1-800-261-3602 and discuss your needs with our Sales Engineers.

ATKINSON ELECTRONICS, INC.

14 West Vine Street
Murray, UT 84107
Phone (801) 262-6400, 1-800-261-3602
Fax (801) 261-3796, E-MAIL: cbdaei@atkinsonel.com

Distributed by:

REV 9/97